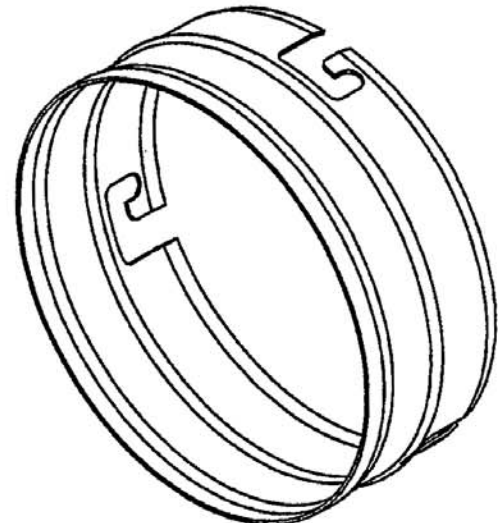
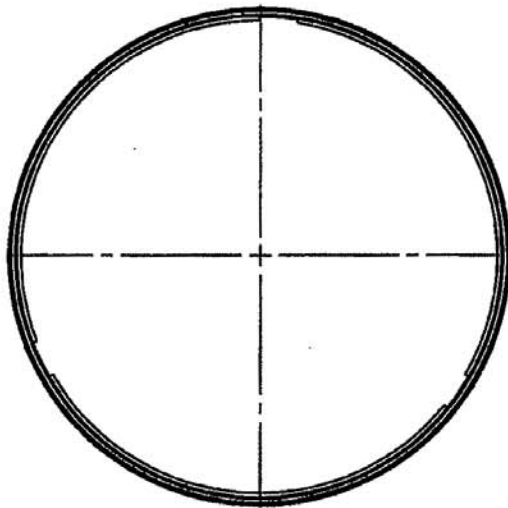
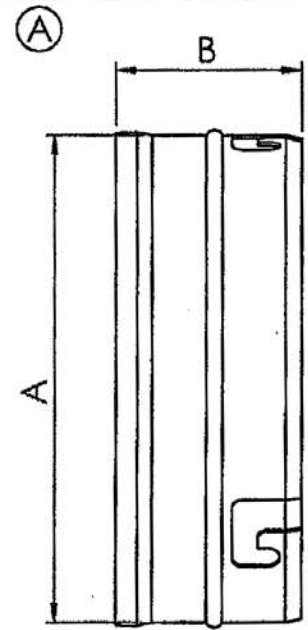


Part Number	A ( $\pm 0.02"$ )	B	Thickness
03080400F	3.73	1.87	0.035
03080500F	4.73	1.87	0.035
03080600F	5.73	1.87	0.035
03080800F	7.73	1.87	0.035
03081000F	9.73	1.87	0.035
03081200F	11.73	1.87	0.035
03081400F	13.73	1.87	0.035
03081600F	15.73	1.87	0.035
03081800F	17.73	1.87	0.035
03082400F	23.73	1.87	0.035

REVISIONS				
ZONE	REV.	DESCRIPTION	DATE	APPROVED
	A	UPDATED DIM "A" IN TABLE	5/28/2009	



NOTES:  
 1. 3 EQUALLY SPACED SLOTS FOR MALE CONNECTOR TO FIT IN

UNLESS OTHERWISE SPECIFIED:		NAME	DATE
DIMENSIONS ARE IN INCHES		DRAWN	KJB 08/11/05
TOLERANCES:		CHECKED	DAS 08/11/05
DIAMETER ( $< 8"$ ) $\pm .125"$		MFG APPR.	
DIAMETER ( $> 8"$ ) $\pm .250"$		Q.A.	JJM 08/11/05
LENGTH ( $25'$ ) $+ 12"$			
LENGTH ( $50'$ ) $+ 24"$			
MATERIAL		304 STAINLESS STEEL	
PROPRIETARY AND CONFIDENTIAL		COMMENTS:	
DO NOT SCALE DRAWING			

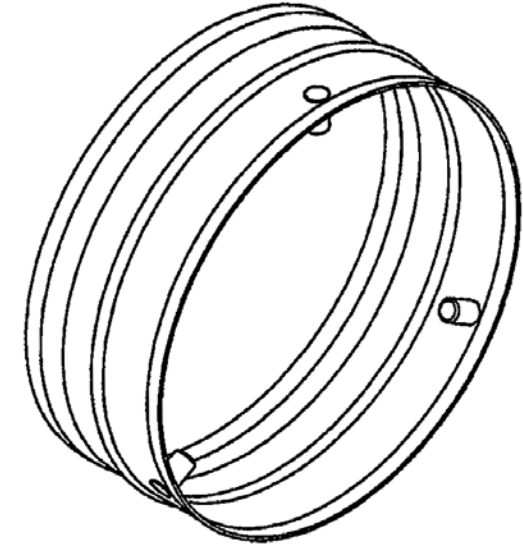
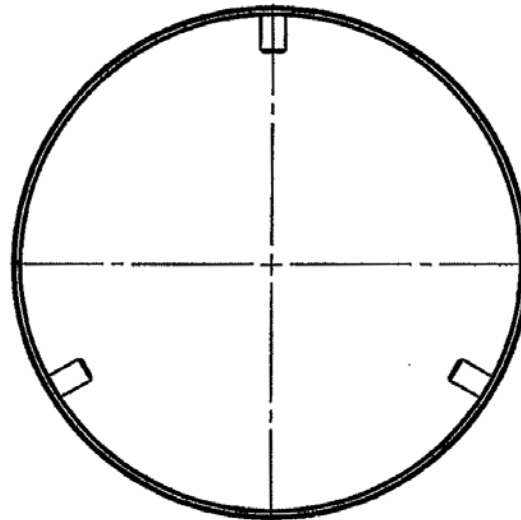
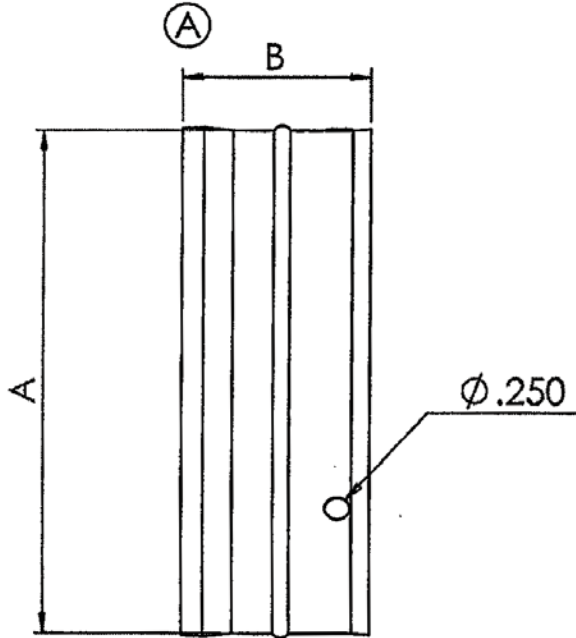
 **HOSECRAFT USA**

TITLE:  
**304SS J LOCK F CONNECTOR**


SIZE	DWG. NO.	REV
<b>A</b>	<b>0308F</b>	<b>A</b>
SCALE: 1:2	WEIGHT:	SHEET 1 OF 1

Part Number	A (± 0.02")	B	Thickness
03080400M	3.88	1.87	0.035
03080500M	4.88	1.87	0.035
03080600M	5.88	1.87	0.035
03080800M	7.88	1.87	0.035
03081000M	9.88	1.87	0.035
03081200M	11.88	1.87	0.035
03081400M	13.88	1.87	0.035
03081600M	15.88	1.87	0.035
03081800M	17.88	1.87	0.035
03082400M	23.88	1.87	0.035

REVISIONS				
ZONE	REV.	DESCRIPTION	DATE	APPROVED
	A	UPDATED DIM "A" IN TABLE	5/28/2009	



NOTES:  
 1. 3 EQUALLY SPACED PEGS TO INSERT INTO FEMALE CONNECTOR

UNLESS OTHERWISE SPECIFIED:		NAME	DATE	 <b>HOSECRAFT USA</b> TITLE: <b>304SS J LOCK M CONNECTOR</b>	
DIMENSIONS ARE IN INCHES		DRAWN	KJB		08/11/05
TOLERANCES:		CHECKED	DAS		08/11/05
DIAMETER (<8") ± .125"		MFG APPR.			
>8") ± .250"		G.A.	JJM		08/11/05
LENGTH (25') + 12"		COMMENTS:			
(50') + 24"					
MATERIAL				SIZE	
304 STAINLESS STEEL				DWG. NO.	
PROPRIETARY AND CONFIDENTIAL				REV	
				<b>A</b>	
				<b>0308M</b>	
				<b>a</b>	
DO NOT SCALE DRAWING				SCALE: 1:2	
				WEIGHT:	
				SHEET 1 OF 1	